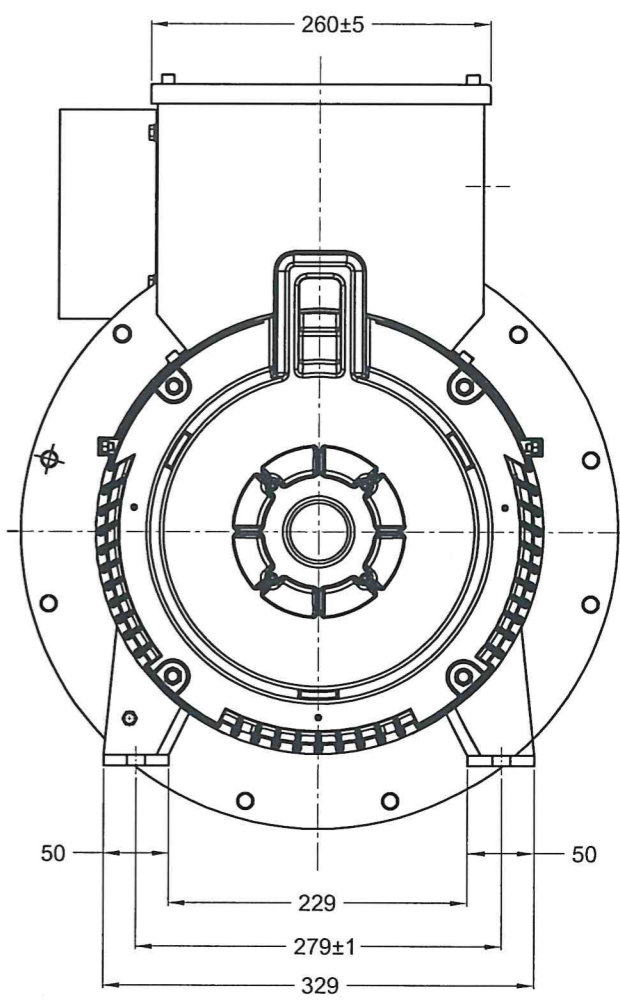
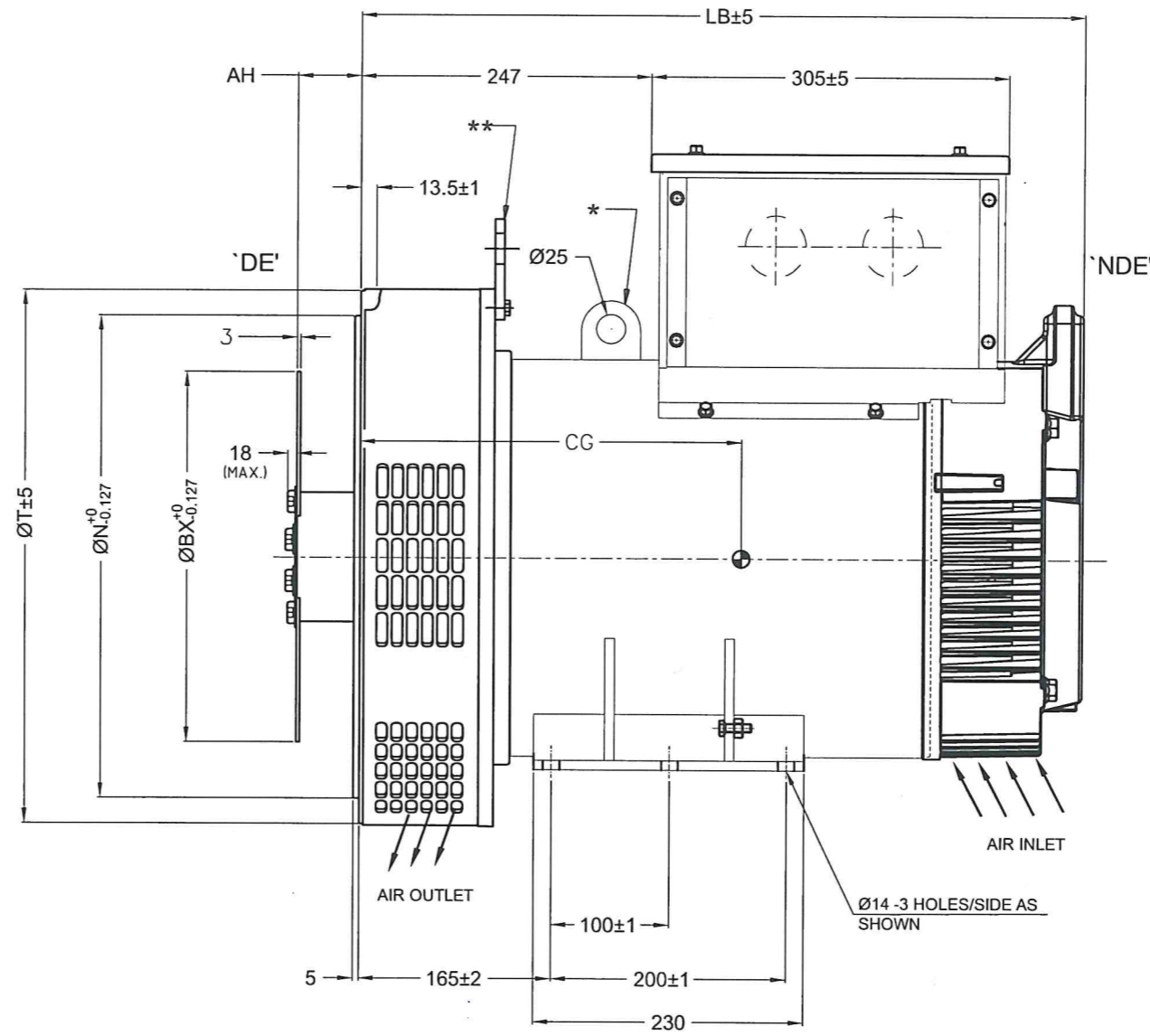
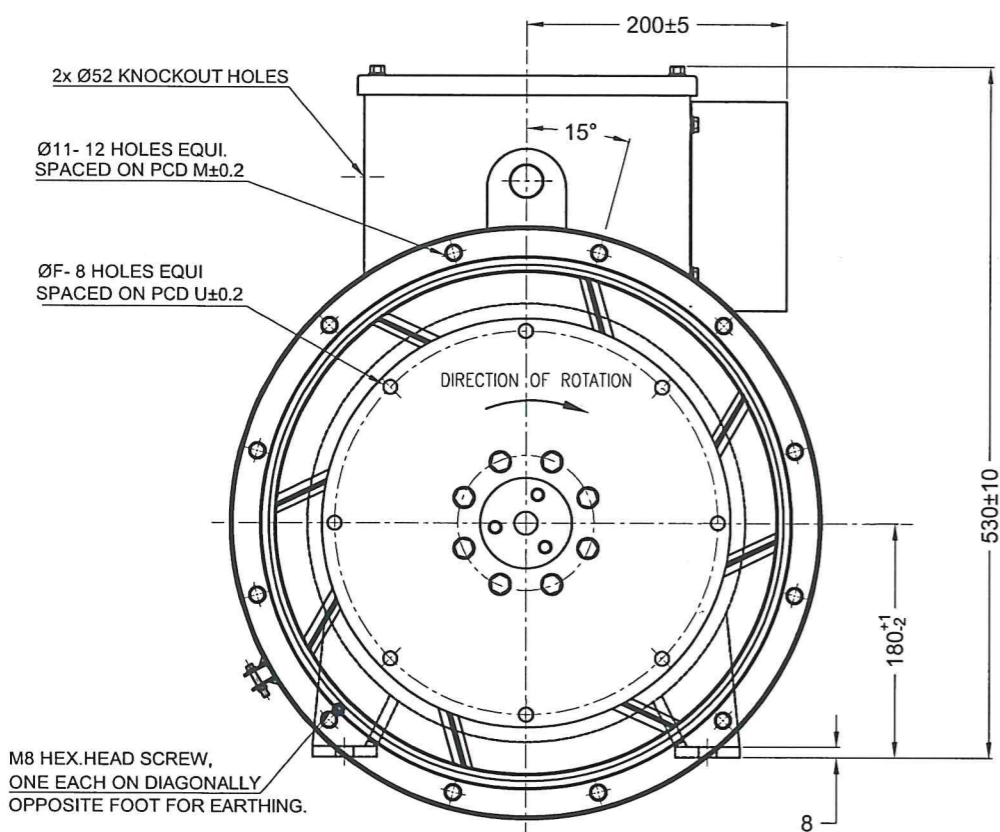


SL No.	FRAME	LB	CG	WEIGHT(Kg) APPROX.
1	LSA 180 A 16	550	230	117
2	LSA 180 B 16		230	117
3	LSA 180 C 16		230	117
4	LSA 180 D 16		250	137
5	LSA 180 E 16		265	151
6	LSA 180 F 16		280	165
7	LSA 180 G 16	620	295	185
8	LSA 180 H 16		295	185
9	LSA 180 I 16		310	200
10	LSA 180 J 16		325	214

FLANGE	ØT	ØN	PA
SAE 2	490	447.68	466.72
SAE 3	453	409.58	428.62

DISC	AH	ØBX	ØF	GA
11.5"	39.6	352.42	11	333.38
10"	53.8	314.32	11	295.28



NOTES:-

- SUFFICIENT CLEAR SPACE AROUND THE GENERATOR TO BE PROVIDED FOR FREE ENTRY / EXIT OF THE REQUIRED QUANTITY OF COOLING AIR TO ENSURE GOOD VENTILATION.
- ENSURE THE ENGINE FLYWHEEL & FLYWHEEL HOUSING SPIGOT DIMENSIONS TO MATCH THE GENERATOR FLANGE & DISC DIMENSIONS AS PER SAE. CHECK FOR ECCENTRICITY & OVALITY IN THE SPIGOT.

NOTE : * APPLICABLE FOR SL No. 7 TO 10
 ** APPLICABLE FOR SL No. 1 TO 6

CONSTRUCTION : B3
 COOLING : IC01
 PROTECTION : IP 23

ALL INFORMATION CONTAINED IN THIS DOCUMENT IS CONFIDENTIAL AND THE PROPERTY OF THE COMPANY. REPRODUCTION OF THESE IN ANY FORM IS TO BE DONE WITH PERMISSION OF THE COMPANY.

REV	ZONE	CT No.	BRIEF RECORD	SIGNATURE	DATE

---		LEROY-SOMER	
USED ON	LSA 180 16 (SINGLE BEARING)	SCALE	NTS
DRAWN	AC	CHECKED	VNR
APPROVED	VK	DATE	07.05.2024
TITLE		DRG. No.	
DIMENSION DRAWING		AG324162 R00	
1st RELEASE ON CT No.		--	
SHEET No.		01 OF 01	
NIDEC INDUSTRIAL AUTOMATION INDIA PRIVATE LTD BANGALORE-562162			